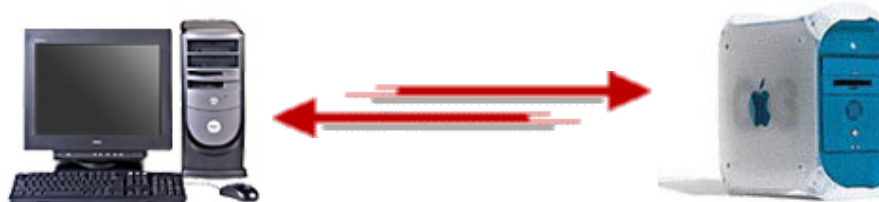
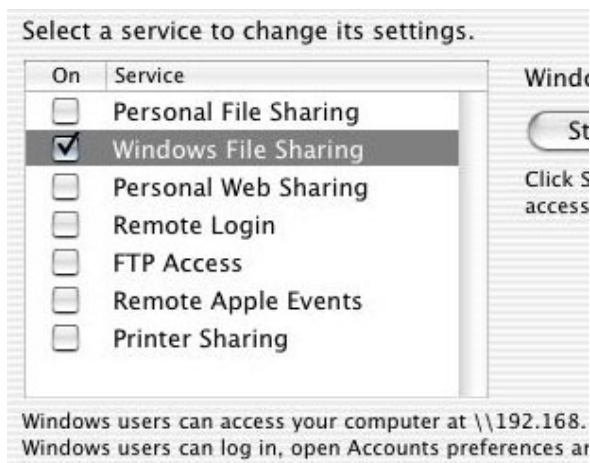


Sharing files on a Mac running Jaguar with a PC running Windows 98

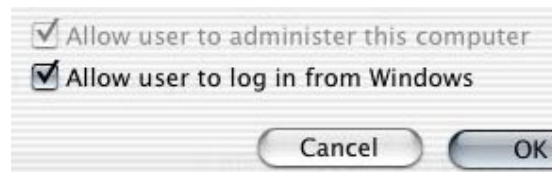


Note: The below assumes you already have both your Mac and PC computers connected to a network (ethernet or wireless) and that they can ping one another.

Once you know your computers can "see" one another, one way to share files between the two is to enable Windows file sharing on your Mac then connect to it from your PC. For an overview of the procedure, check the following Apple KB article: <http://docs.info.apple.com/article.html?artnum=107083>



Begin by starting Windows file sharing on your Mac. Open System Preferences, select the Sharing control panel, and on the Services tab check the box next to Windows File Sharing. This should turn on file sharing, and the path for accessing your Mac from a Windows PC should be shown at the bottom of the window (e.g. \\192.168.1.2\shoemkr).



Next we need specify which users setup on your Mac can connect from a Windows computer. While still within System Preferences, switch to the Accounts control panel. Choose the Users tab, select one of the users you would like to be able login with, then click the Edit User button. At the bottom of the window that appears check the box to "Allow user to log in from Windows," then click OK. Perform the same steps for any other users you would like. (Note: Be sure to use the "Short Name" specified for this user - that is shown within this same window - when you actually attempt to connect to your Mac from Windows.)



[Why did I create these pages?](#)

Related information:

[Mac to PC file sharing](#)

Instructions for sharing files on your PC with your Mac

[JoelandFaith.com Forum](#)

Post questions and get answers

[Ping how-to](#)

Directions for pinging one computer from another

Download a [PDF copy](#) (266 Kb) of this page for future reference

Having problems?

[No Login Prompt](#)

Fix for a missing login window.

[Change Windows](#)

[File Sharing](#)

[Workgroup](#)

Apple KBase article

[Error -43 When](#)

[Copying Files to](#)

[Windows Shared](#)

[Volume](#)

Apple KBase article

["Well Known" TCP](#)

[and UDP Ports](#)

Apple KBase article

Additional info.

[Explanation of Instructions](#)

Details and background on the directions given on

this page.

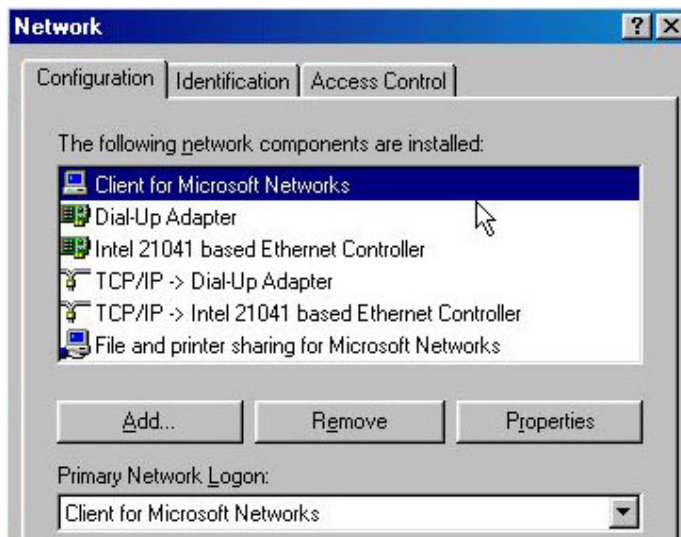
[Skip Login Window](#)

Permanently bypass the login prompt at bootup.

[Share All Files](#)

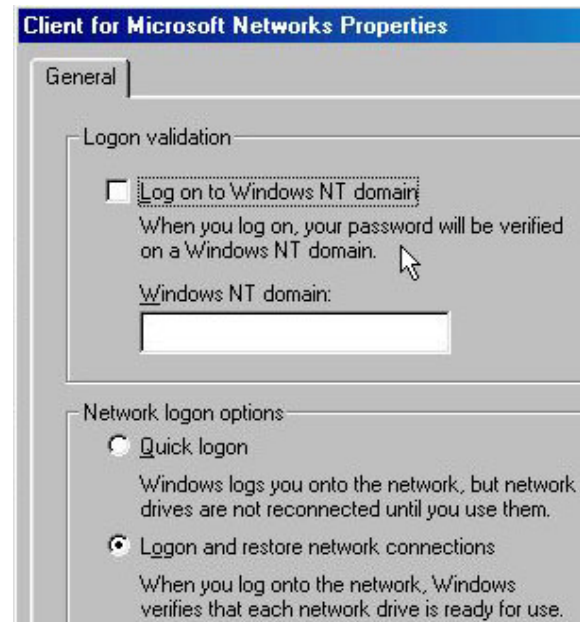
Access all of your Mac's hard drive(s) rather than just a single folder.

Note that you can also often connect to your Mac using its computer name (as specified in the Sharing control panel under System Preferences) rather than its IP address.



With Client for Microsoft Networks installed, confirm that it is also set as the Primary Network Logon (in the drop-down menu just below the list of network components). In addition, to ensure the client is setup properly, highlight Client for Microsoft Networks within the Network control panel window and click the Properties button. Verify that the "Log on to Windows NT domain" box is *not* checked. After double-checking that setting, click OK to close that window, then click OK again to close the Network control panel, at which time you will be prompted to restart; click Yes to do so.

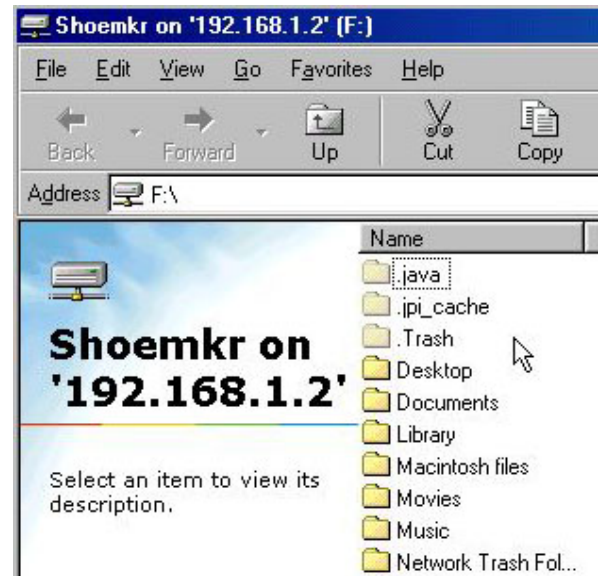
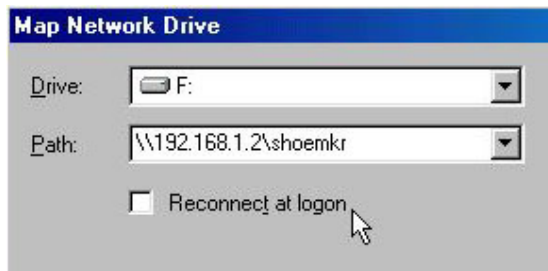
Now move to your Windows PC and click on the Start button, go to Settings and then choose Control Panel. Once that window appears double-click on Network. Though your list of network components may not look exactly the same as the picture at left, you need to make sure that Client for Microsoft Networks is installed and correctly configured. If you do not have Client for Microsoft Networks shown in your list of components, click the "Add" button. Within the list of items shown, click once to highlight Client and then click "Add" again. Next, on the left-hand side of the window that appears, first highlight Microsoft, then on the right-hand side highlight Client for Microsoft Networks, then click OK. That component should now be listed.



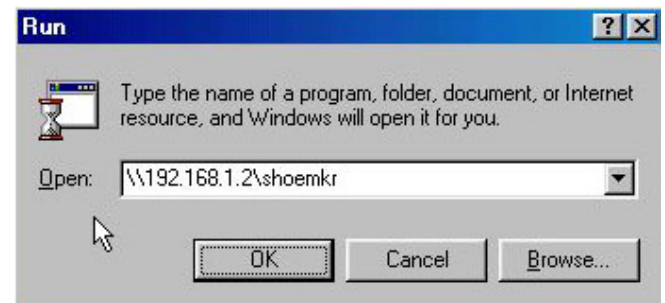
Once you have rebooted you should be prompted with a login window asking for a username and password. For the username, type in the "short name" for whichever OS X user account you would like to connect to your Mac with. Enter the corresponding password for that account as well and then click OK. (When/if you are shown a second prompt to confirm your password, simply delete the "*****" shown in the first field - to make both fields blank - and then click OK. This extra window will then no longer appear for that username.)



After Windows has finished loading, you can now attempt to connect to your Mac in a few different ways, two of which are noted here. One option is to map the OS X-based share to a drive letter. To do that, right-click on the Network Neighborhood icon on your Desktop and choose Map Network Drive. Within the window that is displayed, select an available drive letter (e.g. F:), then in the Path field type in the SMB address for the share you have setup on your Mac (e.g. \\192.168.1.2\shoemkr), and click OK. A window showing your Mac's shared folder should automatically appear.



Another procedure for connecting to your Mac is by clicking on the Start button and choosing Run. Within the "Open" field type in the path to your Mac's shared folder (e. g. \\192.168.1.2\shoemkr), then click OK. Once again, a window will auto-appear showing the contents of the Home folder for the user you logged in with.



These are the methods we use for sharing files between our Mac OS X 10.2.x-based B/W G3/400 and Windows 98 (which we have installed within Virtual PC running on a Power Mac 7500) via a router/hub. Please keep in mind that you may run into some problems specific to your network and machine setup when trying to get your computers connected that could keep things from functioning properly. Be sure to check the extra tips and guides shown within the left frame of this page, as well as both the [Apple](#) and [Microsoft](#) knowledge bases for help in fixing the particular issues you need to resolve to get things working.

If you need additional assistance or would like to share your thoughts on this or any of our web pages, please visit our [forum](#). There you can post questions, view previously answered topics, as well as submit feedback regarding this site.

Copyright © 2003-04, 2007 [Joel Shoemaker](#)

Hardware photos copyright [Apple Computer](#)
and [Dell Computer Corporation](#)